

ISO 9001:2008

ColumbusJACK/Regent

"The Strength of Experience"

PRODUCT DATA SHEET

UNIVERSAL TRIPOD JACK

2 STAGE

Model 2994-010, 5 Ton Capacity

Standard Features

- ♦ Two (2) Hydraulic Stages with Mechanical Lock Nuts
- ♦ Spring Loaded Swivel Casters
- ♦ Skydrol Resistant Yellow Paint or to customer specifications

Documentation

- ♦ Operation and Maintenance Manual
- ♦ Certificate of Conformance
- ♦ Load Test Reports
- ♦ Factory New - 12 Month Written Warranty

Available Optional Equipment

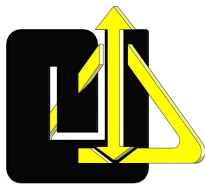
- ♦ Dual Reading Pressure Gauge Assembly
- ♦ Air Powered Pumping Unit
- ♦ Adjustable Leveling Footpads with Bubble Level
- ♦ Tow Bar Assembly



Our Universal Height Tripod Jacks are used on and for a variety of aircraft jacking applications (Narrow & Wide Body) during normal aircraft maintenance checks. These jacks provide the customer with a variety of low minimum height tripod jacks with two stages of hydraulic lift for low and high wing, nose and tail jacking applications. They are designed and built to withstand harsh environmental conditions, rugged use and to provide many years of continuous service. The automatic safety by-pass valve prevents the lifting of a load greater than the capacity of the jack. Threaded rams with mechanical lock nuts prevent lowering of the jack under load in case of hydraulic leakage. Our Universal Tripod Jacks meet or exceed all known commercial and/or military requirements and specifications, and are cycle tested, load tested and proof-load tested to ensure the jack's hydraulic and structural integrity. We guarantee our customer a quality and dependable product and assure them of our continued product support regardless of the age of the jack.

UNIVERSAL 2 STAGE TRIPOD JACK SPECIFICATIONS

VERTICAL CAPACITY (Tons/m tonnes)	MINIMUM HEIGHT (Inches/mm)	HYDRAULIC LIFT (Inches/mm)	SCREW EXTENSION (Inches/mm)	MAXIMUM EXTENDED HEIGHT (Inches/mm)	NET WEIGHT (Est.) (Lbs/kg)	CRATED WEIGHT (Est.) (Lbs/kg)	CRATE DIMENSIONS (Est. - L x W x H) (Inches/mm)	CU FT CRATED (Est.) (Cu ft/cu m)
5.0	20.0	26.0	4.0	50.0	245	300	36x 36 x28	21.0
4.5	508	660	102	1,270	111	136	914 x 914 x 711	0.6



ISO 9001:2008

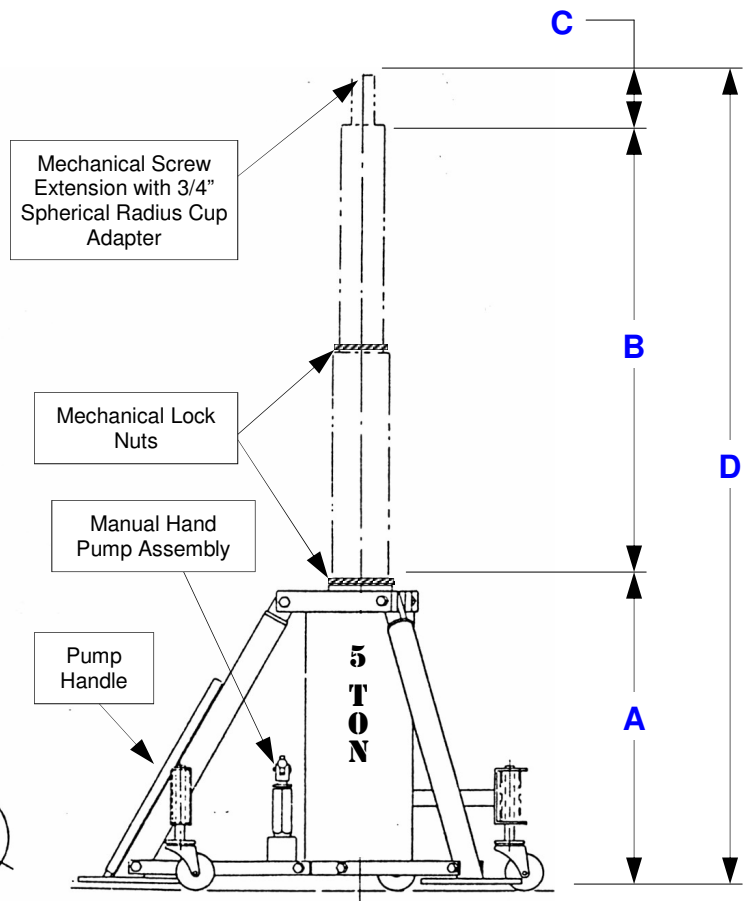
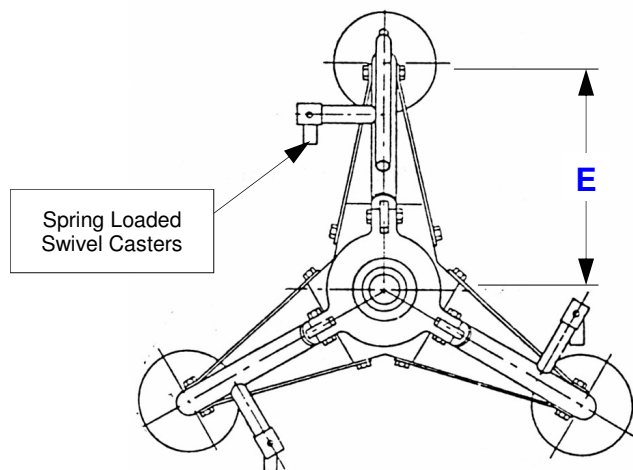
ColumbusJACK/Regent

"The Strength of Experience"

UNIVERSAL TRIPOD JACK 2 STAGE

Model 2994-010, 5 Ton Capacity

JACKING APPLICATIONS	
FWD	AFT
BOMBARDIER DASH 7	-----
-----	AGUSTA SUPER PUMA AS332CL
EUROCOPTER AS350 A-STAR LONG SKID	-----



UNIVERSAL 2 STAGE TRIPOD JACK SPECIFICATIONS					
	A	B	C	D	E
VERTICAL CAPACITY (Tons/m tonnes)	MINIMUM CLOSED HEIGHT (Inches/mm)	HYDRAULIC LIFT (Inches/mm)	SCREW EXTENSION (Inches/mm)	MAXIMUM EXTENDED HEIGHT (Inches/mm)	TRIPOD RADIUS (Inches/mm)
5.0	20.0	26.0	4.0	50.0	15.0
4.5	508	660	102	1,270	381