

ISO 9001:2008

ColumbusJACK/Regent

"The Strength of Experience"

PRODUCT DATA SHEET PORTABLE FLOOR CRANE *Model 9609-010, 2,000 Lb Capacity*

Standard Features

- ♦ 2,000 pound capacity at any height
- ♦ Air transportable with Tie Down Rings
- ♦ 12" Poly Tread Swivel Casters with Swivel Locks and Caster Brakes
- ♦ Completely self-contained with manually operated Winch
- ♦ Rapid Deployment - **No Tools Required**
- ♦ Towable up to 5 mph in Transport Mode
- ♦ High degree of reliability
- ♦ Very low maintenance
- ♦ Used in adverse environments
- ♦ Skydrol Resistant Yellow

Documentation

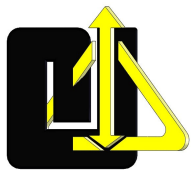
- ♦ Operation and Maintenance Manual
- ♦ Certificate of Conformance
- ♦ Load Test Reports
- ♦ Factory New - 12 Month Written Warranty



Our Portable Floor Cranes are designed and built to meet or exceed the most demanding requirements of the international ground support markets, both commercial and military applications, and to withstand harsh environmental conditions, rugged use and to provide many years of long and dependable service. The Portable Floor Cranes are designed to lift 1,000 to 8,300 pounds at any height, depending on the model. They are air transportable with tie down, and with the outriggers and mask properly stored and secured it can be towed at 5 MPH in the Transport Mode. Our low maintenance Portable Floor Cranes can be deployed by one person and are manually erected and operated by a single winch.

PORTABLE FLOOR CRANE SPECIFICATIONS								
VERTICAL CAPACITY (Lbs/kg)	MAX TOWING SPEED* (MPH/kph)	12" CASTERS	RAMP MOBILITY Degrees	MOBILITY	NET WEIGHT (Est.) (Lbs/kg)	CRATED WEIGHT (Est.) (Lbs/kg)	CRATE DIMENSIONS (Est.) L x W x H (Inches/mm)	CU FT CRATED (Est.) (Cu ft/cu m)
2,000	5	4	20	<i>Air Transportable</i>	2,250	3,200	318 x 63 x 80	928
907.2	8.0	305			1,021	1,452	8,077 x 1,600 x 2,032	26.2

*In transport mode only



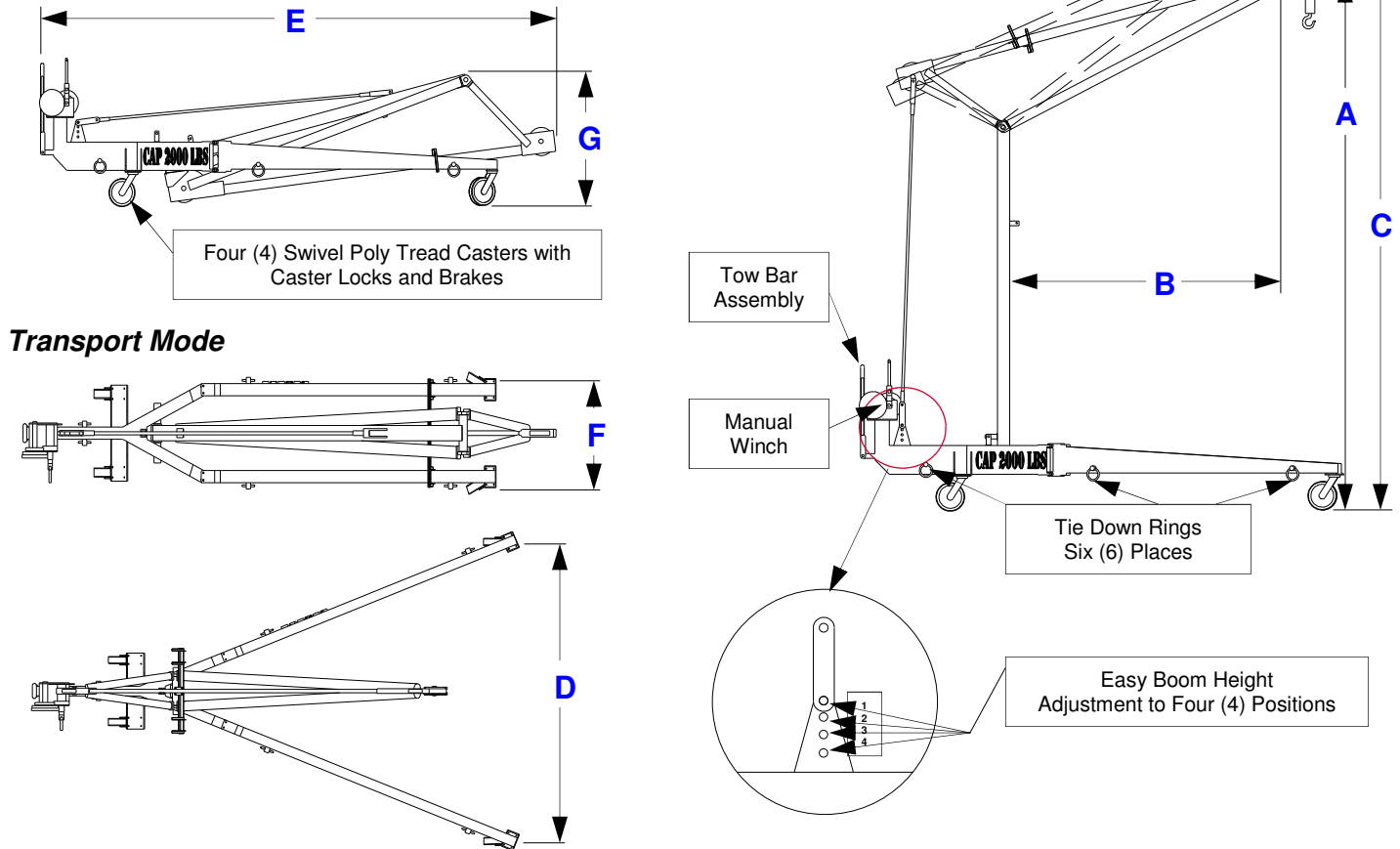
ISO 9001:2008

ColumbusJACK/Regent

"The Strength of Experience"

PORTABLE FLOOR CRANE

Model 9609-010, 2,000 Lb Capacity



PORTABLE FLOOR CRANE SPECIFICATIONS								
VERTICAL CAPACITY (Lbs/kg)	4 LIFT MODE POS.	A	B	C	D	E	F	G
		MAXIMUM HOOK HEIGHT (Inches/mm)	MAXIMUM HORIZ. REACH (Inches/mm)	OVERALL HEIGHT (Inches/mm)	OUT-RIGGER EXTENDED WIDTH (Inches/mm)	TRANSPORT MODE		
						LENGTH (Inches/mm)	WIDTH (Inches/mm)	HEIGHT (Inches/mm)
2,000	1	297	127	315	175	314	59	72
907.2		7,544	3,226	8,001	4,445	7,976	1,499	1,829
2,000	2	303	123	321	175			
907.2		7,696	3,124	8,153	4,445			
2,000	3	309	119	327	175			
907.2		7,849	3,023	8,306	4,445			
2,000	4	315	115	332	175			
907.2		8,001	2,921	8,433	4,445			

AIRCRAFT APPLICATIONS
 GE90, TRENT 800, PW4098
 Fan Cowl & Inlet Nose Cowl
 Removal & Installation

B777	B737	A320
B767	A340	A319
B757	A330	---
B747	A321	---